

## G $\alpha_o$

**Catalog Number:** 26009

**Gene Symbol:** Gnao

**Description:** Anti-G $\alpha_o$  Mouse Monoclonal Antibody

**Background:** Heterotrimeric G proteins are critical cellular signal transducers. G $\alpha_o$  belongs to the G $_i$  sub-family of G proteins that could mediate the inhibition of adenylyl cyclases. Other biochemical and physiological functions of G $\alpha_o$  proteins are being explored.

**Immunogen:** Recombinant full length protein of G $\alpha_o$

**Tested Applications:** ELISA, WB, IHC

**Recommended Dilutions:**

ELISA 1:1000-1:5000

WB 1:100-1:2000

**Concentration:** 1 mg/ml

**Host:** Mouse

**Clonality:** Monoclonal

**Isotype:** IgG

**Purity:** Purified from ascites

**Format:** Liquid

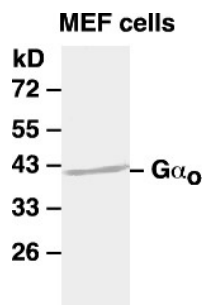
**Preservative:** No

**Constituents:** PBS (without Mg $^{2+}$  and Ca $^{2+}$ ), pH7.4, 150 mM NaCl, 50% glycerol

**Species Reactivity:** G $\alpha_o$  antibody recognizes G $\alpha_o$  of vertebrates.

**Storage Conditions:** Store at -20°C. Avoid freeze / thaw cycles

### Western blot:



**WB: anti-G $\alpha_o$  mAb**

Western blot analysis of G $\alpha_o$  proteins.

Whole-cell lysate of MEF cells was used for western blots with the monoclonal anti- G $\alpha_o$  antibody (Cat. # 26009).

FOR RESEARCH USE ONLY. NOT FOR DIAGNOSTIC APPLICATIONS